



Company Profile

TABLE OF CONTENTS

Page 3
WELCOME TO OUR COMPANY

Page 4
MEET THE TEAM

Page 5
OUR INDUSTRIES

Page 6 - 7
OUR PRODUCTS

Page 8
OUR PROJECTS





Established in 2019 in Botswana by Amanda Marais, Metsi Supplies Botswana soon became a preferred supplier within the fluid conveyance industry.

In 2023 it became necessary to open a second branch in South Africa. Bringing on board Benjamin Marais and Samuel Marais as directors respectively to continue with the steady growth over the past few years and focusing on expanding into Africa.

This family business has entrenched family values into the organization. The way forward for this organization is to bring unrivaled solutions and services into Southern Africa and Africa.



Metsi Supplies Botswana is a 100% Motswana female owned company. Metsi Supplies South Africa is a proudly South African, 100% black owned company with a Level 1 B-BBEE contributor status.

Metsi Supplies prides itself with a combined experience of 40 plus years in the sales and engineering supply industry.

Metsi Supplies strives towards partnering with world leading brands and partners, to bring the best value required for every solution needed. Metsi Supplies Botswana is set apart from other competitors with the agencies for Cla-Val a world-leading designer and manufacturer of automatic control valves and Metron Water meters. Metsi Supplies is a company that is inspired by service and building lasting relationships.



VISION

To be a market leader in the fluid conveyance field in Southern Africa and Africa.



MISSION

We are committed to delivering a superior quality product in the shortest possible time frame. Maximising value for our clients.

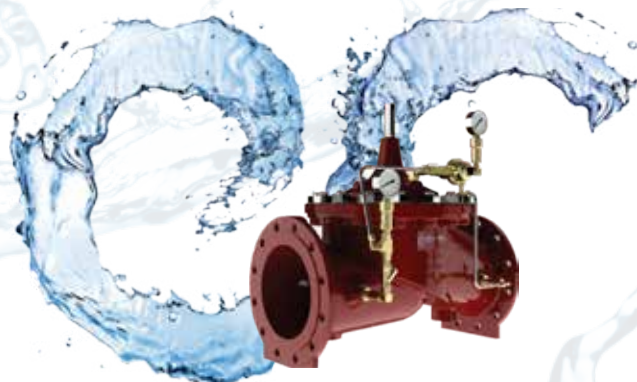


VALUES

- Customer Service
- Innovation
- Resourcefulness
- Integrity
- Our People



MEET OUR TEAM



**Managing Director
Botswana**



Amanda Marais

Email:
amanda@metsisupplies.co.bw

Director



Benny Marais

Email:
sales@metsisupplies.co.bw

**Managing Director
South Africa**



Samuel Marais

Email:
sammy@metsisupplies.com



OUR INDUSTRIES



WATER



MINING



AGRICULTURAL



INDUSTRIAL



FIRE



APPOINTED AGENTS FOR:



Cla-Val

Cla-val is a world-leading designer and manufacturer of automatic control valves. From reducing and relief valves to deluge, air valves and more, Cla-Val manufactures and provides a wide variety of solutions for use in some of the world's most demanding applications.

Metron

A leading supplier of metering products for building services, process and agricultural markets, who supply a wide range of meters suitable for residential to hygienic applications.

ELECTROMAGNETIC FLOW METER, INTEGRATED TYPE



ELECTROMAGNETIC FLOW METER, SEPARATED TYPE



BULK METER

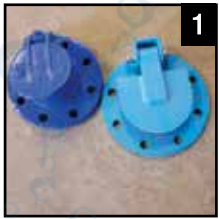


 Fluid Control Solutions	Waterworks • Electronics
	Fire Protection
	Fueling • Marine
	Mining • Industrial
	Building Services

OUR PRODUCTS



PIPES | FITTINGS | FLANGES | VALVES | COUPLINGS | PIPE TOOLS | PUMPS | IRRIGATION



Flap Valves



Cast Iron Fittings



Coppertube & Fittings



Galvanized Fittings



Hemp & P.T.F.E Tape



Gaskets, Bolts & Hooks



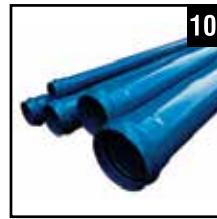
Float Valves



Waterwork Valves



Cascade Clamps



uPVC Pipes



uPVC Bends



PVC Mining Pipes



H.D.RE Saddle & Fittings



PVC Pressure Fittings



Pipe Couplings



Brass Bibtaps



Brass Gate Valves



Air Vents



Control Valves



Brass Ferrels



Wafer Butterfly Valves



C.I Strainers



H.D.RE Flanged Pipes



Galv. Screwed Flanges



Air Valves



H.D.RE Pipes



Expansion Bellows



Steel Specials



Water Meters



Helix Meters



Manhole Cover & Frames



Mentis Grating



Ductile Pipe



Prepaid Meters



RSV Gate Valves



Fire Hydrant & Hose Reels

OUR PRODUCTS



RESILIENT SEAL GATE VALVE FLANGED PN16 - SANS



WAFER BUTTERFLY VALVE PN16



FLANGED Y-STRAINER PN16



EQUILIBRIUM FLOAT VALVE PN16



FLEXIBLE COUPLING



KII MECHANICAL COUPLINGS



CHECKFLO CHECK VALVES



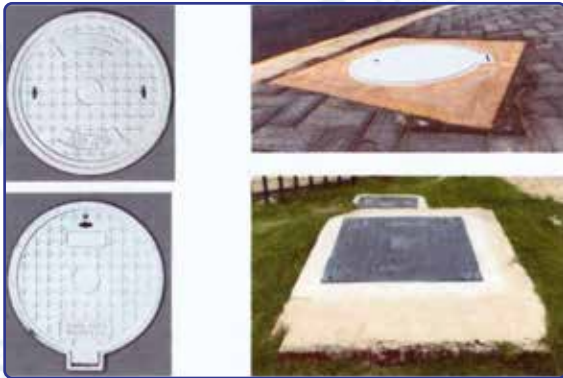
VEROFLO FITTINGS





OUR PRODUCTS

COMPOSITE MANHOLES, COVERS AND FRAMES



DMC HYDRANT AND VALVE BOXES AND COVERS



STORMWATER CATCHPIT INLET SETS



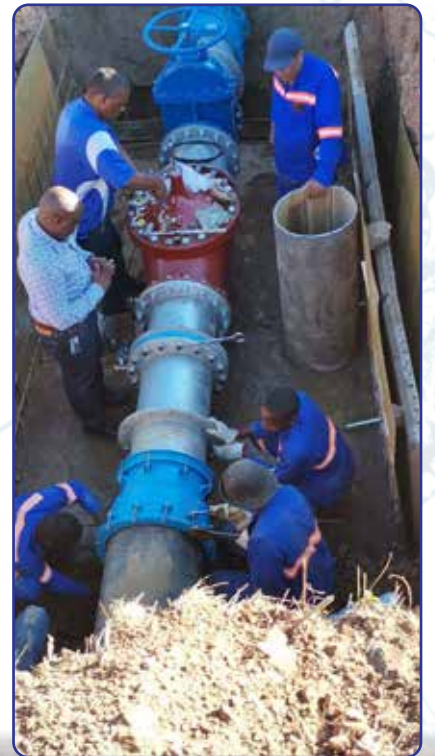
FIBRE REINFORCED POLYMER GRATING



OUR PROJECTS



INSTALLED DW109 METERS WITH BOXES IN MOGODITSHANE.



Supply and installation of 400mm Cla-Val Rate of Flow at Rankepa Boatile for W. U. C.





CONTACT US

BOTSWANA



+267 7610 1206



+267 311 1333



sales@metsisupplies.co.bw



Plot 32130 Phakalane, Botswana

SOUTH AFRICA



+2779 930 1921



sammy@metsisupplies.com



1 Herbert Road, Petervale, Bryanston